

KINGBIRD

BOTANIC RIDGE



House and Land Package \$669,000

Bedroom 4 | Bathroom 2 | Garage 2

BILLY 136

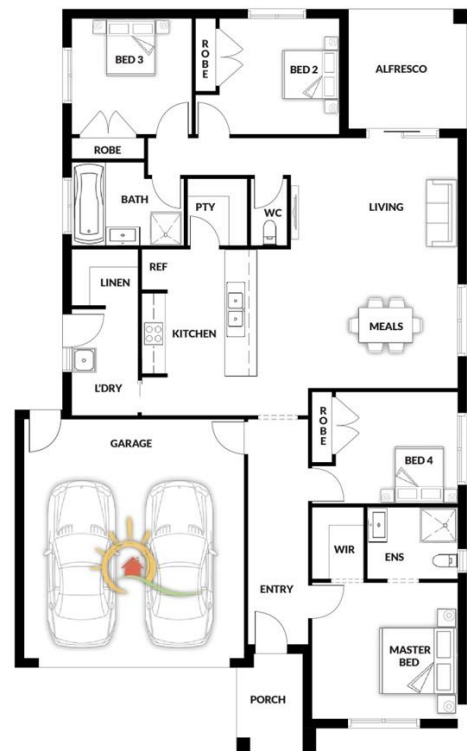
Lot 206

Land Size: 350m²

Frontage: 12.5m

Inclusions

- Stone Benchtop
- All Floor Coverings
- S/S Appliances
- Tiled Shower Bases
- 3.5 KW Solar Panels for Electricity
- Handheld Showers
- Flyscreens



Builder: Quality House and Land

Phone: Craig Ward - 0409 695 188

Land Agent: Shane

Phone: 0488 972 727

kingbirdliving.com.au

Sales Office location 91-95 Browns Rd, Botanic Ridge Open Saturday & Wednesday 12pm-5pm

Information contained herein is subject to change without notice. No responsibility is accepted by the vendor nor the agent for any action taken in reliance thereon. Prospective purchasers should make their own enquiries to satisfy themselves on all aspects. Details herein do not constitute any representation by the vendor or the agent and are expressly excluded from any contract. Images are artist's impression and for illustrative purposes only. Public open space subject to change.

DEVELOPED BY
KingBird
Developments
Pty Ltd

LAND SALES BY
KaiKura

Builder Disclaimer: House and Land Package price correct at time of printing and subject to change without notice. Package price excludes external lighting, telephone services, customer account opening fees, stamp duty on land, legal fees and conveyancing costs including titles and property reports. See our New homes Guide for full details of the standard inclusions. Standard facade is included. Land supplied by the developer. Land prices and availability are subject to change without notice. All house & land packages are subject to developers approval. Printed date 22-08-24