



HOUSE & LAND

\$865,000*

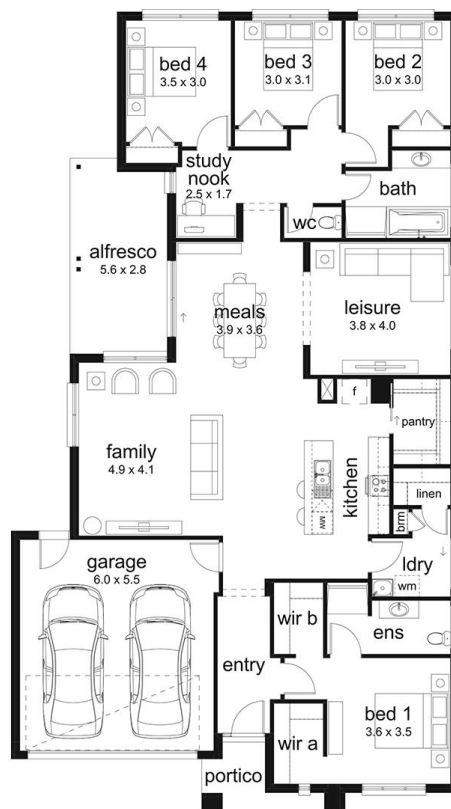
BOTANIC RIDGE – BOTANIC RIDGE

Lot 320 Monkey Drive
Botanic Ridge VIC 3977

Morrison 272 Cadia Façade
(Aspirations Series 2)

Home size: 26.83sq Land size: 490.00m²

- ✓ BAL 12.5 inclusions
- ✓ Site Costs Allowance
- ✓ Recycled water connection
- ✓ NBN/Opticomm/Redtrain/Multinet/CNT Corp. connection
- ✓ Split system air conditioner 3.5k/W
- ✓ Remote control to garage door
- ✓ Flyscreens
- ✓ 600m Stainless Steel Appliances
- ✓ Technika dishwasher
- ✓ Gas ducted heating
- ✓ Floor Coverings
- ✓ Clothesline
- ✓ Letterbox
- ✓ Current Promotion
- ✓ 35m² of colour-through concrete to driveway and portico
- ✓ Walk in robes
- ✓ Tiled shower bases



Go to dennisfamily.com.au or call
1800 DENNIS for more information.

John Shaw 0448 320 121

Reference HL0047544